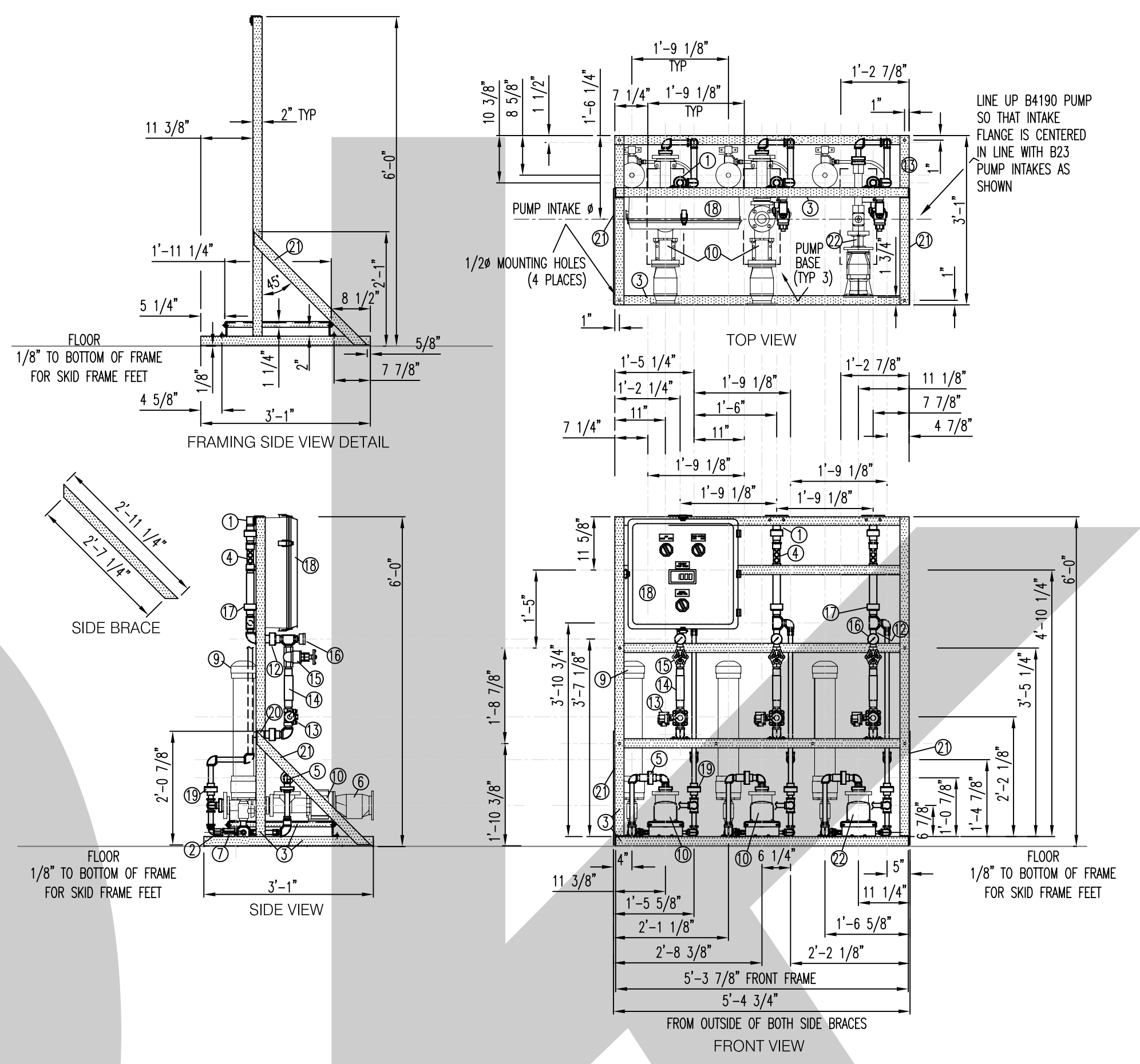
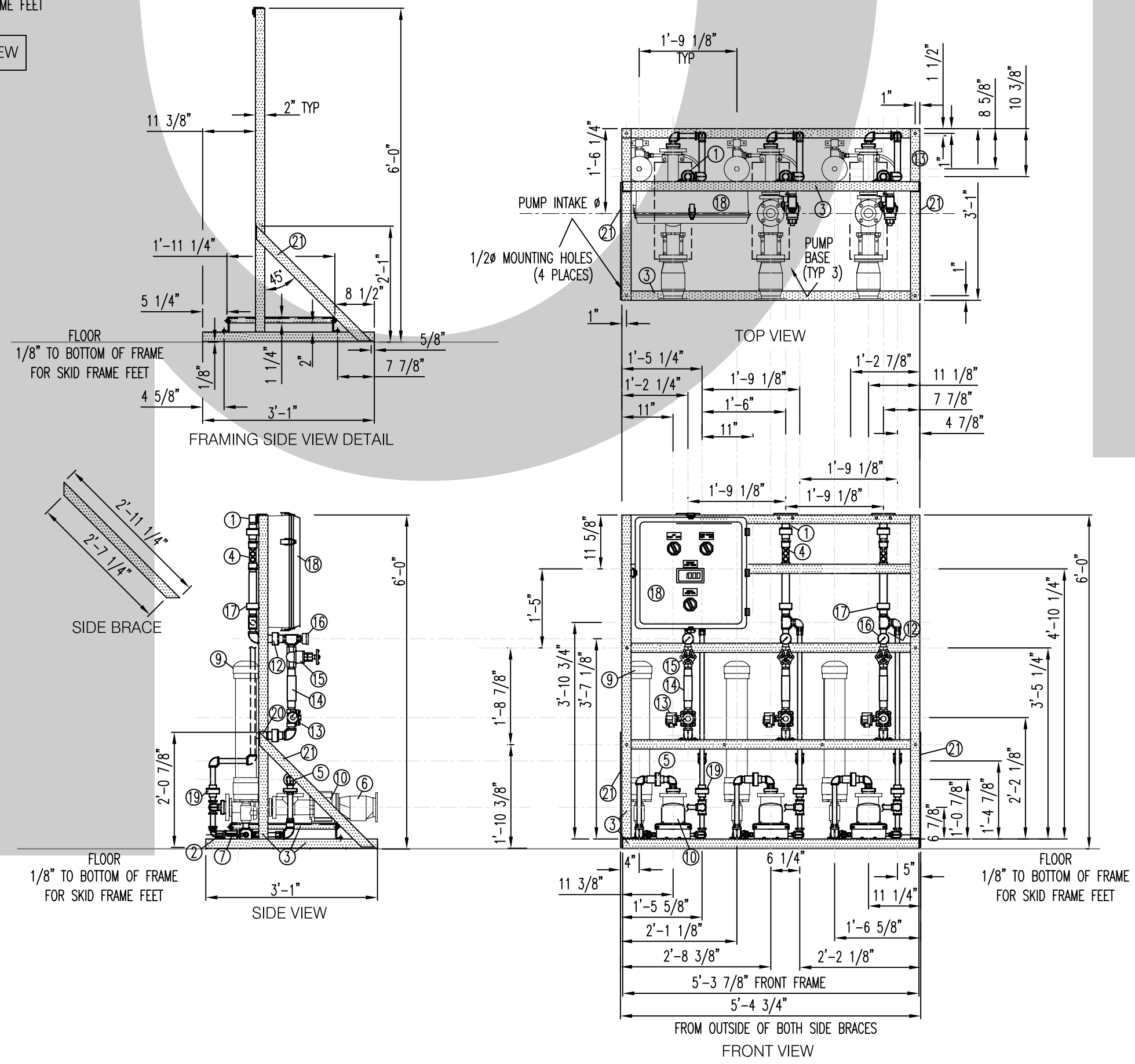


KEY	DESCRIPTION	MATERIAL
1	DISCHARGE, POST DILUTION, 1" FNPT	304SS
2	SOLUTION INLET, 1" FNPT	304SS
3	BASE AND UPRIGHTS	304SS
4	STATIC MIXER, POST DILUTION	SCH80 PVC
5	CHECK VALVE, WATER INLET, 1" FNPT	BRONZE
6	MOTOR, 1725 RPM, 1.0 HP, 90VDC	WASHDOWN DUTY
7	ISOLATION BALL VALVE, SOLUTION INLET, 1" FNPT	SCH80 PVC
8	ISOLATION BALL VALVE, PUMP BLEED, 1/4" FNPT	BRASS/NICKLE
9	CALIBRATION CYLINDER, 4000 mL	SCH80 PVC
10	PC PUMP, 2.7 GPM, B2C-SSF, (2 EACH)	316SS
11	PRESSURE RELIEF VALVE, PUMP DISCHARGE 150 PSI SET POINT	SCH80 PVC
12	ISOLATION BALL VALVE, CALIBRATION CYLINDER	SCH80 PVC
13	SOLENOID VALVE, N.C. WATER INLET, 1" FNPT	BRASS
14	FLOW METER, WATER INLET, 0-10 GPM	ACRYLIC
15	GLOBE VALVE, FLOW CONTROL WATER INLET, 1" FNPT	SCH80 PVC
16	PRESSURE GAUGE	SCH80 PVC
17	CHECK VALVE, WATER INLET, 1" FNPT	BRONZE
18	SYSTEM CONTROL PANEL, NEMA 4X, 24"x24"	FRP
19	ISOLATION BALL VALVE, PUMP DISCHARGE, 1"	SCH80 PVC
20	WATER INLET, 1" FNPT	309SS
21	45° FRAMING SIDE BRACE (TYP 2)	
22	PC PUMP, 0.5 GPM, B4190-SSF, (ONE)	



KEY	DESCRIPTION	MATERIAL
1	DISCHARGE, POST DILUTION, 1" FNPT	304SS
2	SOLUTION INLET, 1" FNPT	304SS
3	BASE AND UPRIGHTS	304SS
4	STATIC MIXER, POST DILUTION	SCH80 PVC
5	CHECK VALVE, WATER INLET, 1" FNPT	BRONZE
6	MOTOR, 1725 RPM, 1.0 HP, 90VDC	WASHDOWN DUTY
7	ISOLATION BALL VALVE, SOLUTION INLET, 1" FNPT	SCH80 PVC
8	ISOLATION BALL VALVE, PUMP BLEED, 1/4" FNPT	BRASS/NICKLE
9	CALIBRATION CYLINDER, 4000 mL	SCH80 PVC
10	PC PUMP, 3.6 GPM, B2C-SSF, (3 EACH)	316SS
11	PRESSURE RELIEF VALVE, PUMP DISCHARGE 150 PSI SET POINT	SCH80 PVC
12	ISOLATION BALL VALVE, CALIBRATION CYLINDER	SCH80 PVC
13	SOLENOID VALVE, N.C. WATER INLET, 1" FNPT	BRASS
14	FLOW METER, WATER INLET, 0-10 GPM	ACRYLIC
15	GLOBE VALVE, FLOW CONTROL WATER INLET, 1" FNPT	SCH80 PVC
16	PRESSURE GAUGE	SCH80 PVC
17	CHECK VALVE, WATER INLET, 1" FNPT	BRONZE
18	SYSTEM CONTROL PANEL, NEMA 4X	FRP
19	ISOLATION BALL VALVE, PUMP DISCHARGE, 1"	SCH80 PVC
20	WATER INLET, 1" FNPT	309SS
21	45° FRAMING SIDE BRACE (TYP 2)	

KEY	DESCRIPTION	MATERIAL
1	DISCHARGE, POST DILUTION, 2" FNPT	304SS
2	SOLUTION INLET, 2" FNPT	304SS
3	BASE AND UPRIGHTS	304SS
4	STATIC MIXER, POST DILUTION	SCH80 PVC
5	CHECK VALVE, WATER INLET, 2" FNPT	BRONZE
6	MOTOR, 1725 RPM, 1.5 HP TEFC	WASHDOWN DUTY
7	ISOLATION BALL VALVE, SOLUTION INLET, 2" FNPT	SCH80 PVC
8	ISOLATION BALL VALVE, PUMP BLEED, 1/4" FNPT	BRASS/NICKLE
9	CALIBRATION CYLINDER, 4000 ML	SCH80 PVC
10	PC PUMP, B2C-SSF, (2 EACH) 10 GPM	316SS
11	PRESSURE RELIEF VALVE, PUMP DISCHARGE 150 PSI SET POINT	SCH80 PVC
12	ISOLATION BALL VALVE, CALIBRATION CYLINDER	SCH80 PVC
13	SOLENOID VALVE, N.C. WATER INLET, 2" FNPT	BRASS
14	FLOW METER, WATER INLET, 0-20 GPM	ACRYLIC
15	GLOBE VALVE, FLOW CONTROL WATER INLET, 2" FNPT	SCH80 PVC
16	PRESSURE GAUGE	SCH80 PVC
17	CHECK VALVE, WATER INLET, 1" FNPT	BRONZE
18	SYSTEM CONTROL PANEL, NEMA 4X	FRP
19	ISOLATION BALL VALVE, PUMP DISCHARGE, 2"	SCH80 PVC
20	WATER INLET, 2" FNPT	304SS
21	45° FRAMING SIDE BRACE (TYP 2)	
22	MAG FLOWMETER 2" FLOWBED	CI/NBR



SAMPLE SPOOL DRAWING MULTI-PUMP SKIDS W/ BILL OF MATERIALS

ARCHITECT: _____

MECH ENGINEER: _____

NO.	DESCRIPTION	DATE
REVISIONS		

SAMPLE CONTRACTOR COMPANY NAME

SAMPLE STREET CITY, STATE ZIP

ph: 000-000-0000
fax: 000-000-0000

**SAMPLE JOB
NAME HERE
CITY, TOWNSHIP, STATE, ZIP**

SAMPLE SPOOL DRAWING

TRIPLEX & DUPLEX SKIDS

scale AS SHOWN
drawn XXX
reviewed JPK
date 00-00-00

SP2

ALL RIGHTS RESERVED. CHANGES OR MODIFICATIONS OR USE OF SHOP DRAWINGS PERMITTED ONLY WITH EXPRESS WRITTEN PERMISSION FROM JPK DRAFTING & DESIGN.